

Call out for Interior/ Design / Architecture students:

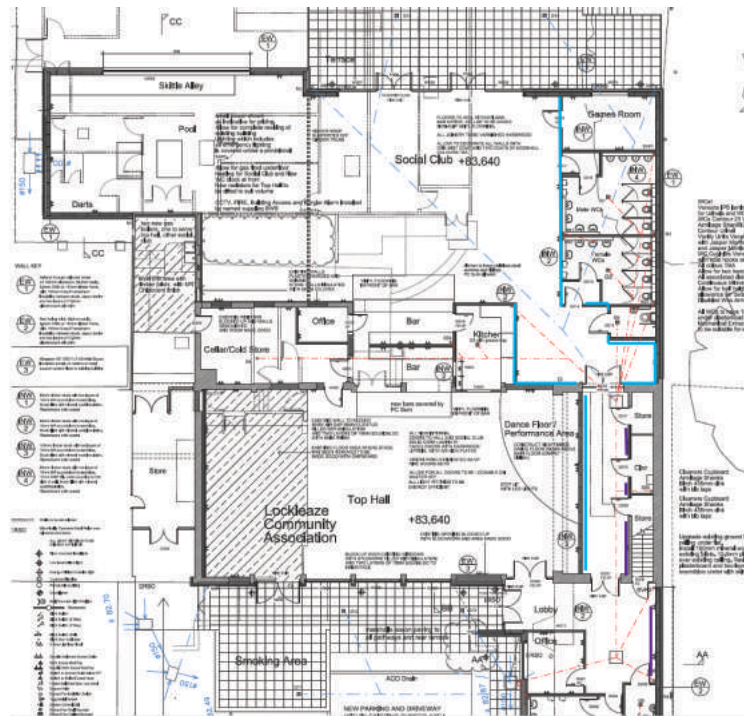
Create designs for the remodelling and redecorating of the Lockleaze Community Association building

A brand new building, completed in 2013, houses the Lockleaze Community Association (LCA), and borders Stoke Park Estate. The interior of the building is a blank slate and offers an exciting design opportunity!

The main social club side of the building is a large room consisting of a full bar, table seating, pool table and skittles alley, and a terrace with views overlooking Stoke Park Estate.

We are looking for a student or group of students to come up with a set of interior designs that would reflect plans to repurpose the building as a hub for community and conservation activities in Stoke Park, as well as a new terrace café, which is slated to open this summer.





In addition, we are looking for creative ideas for a four-meter long, collapsible screen, which would be built to divide off the bar side of the room during the hours the café is open.

An appreciation for natural or eco-design is greatly encouraged, as well as a DIY aesthetic to keep within a tight budget.

This project offers a fantastic real-world opportunity to work with a client and benefit the local community, as well as the possibility to get your designs built!

We are recruiting now for this position, but are flexible to work around your coursework and exam schedules.

If interested, please send a brief email indicating your interest, course/year of study, and CV to Lisa Friedberg, Bristol Parkhive Project Coordinator, at Lisa.Friedberg@uwe.ac.uk.

Please also include a link to an online portfolio or examples of your work if you have them.

www.bristolparkhive.com